

Figure 1: 2Bitcomp

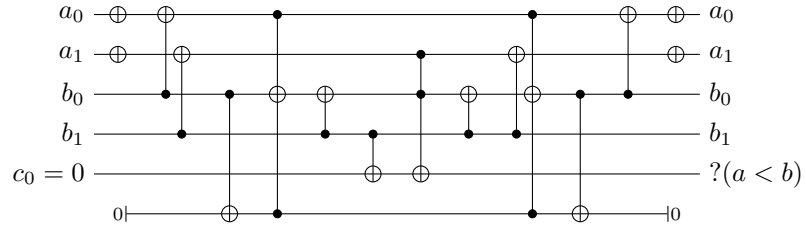


Figure 2: Adder_CDKM

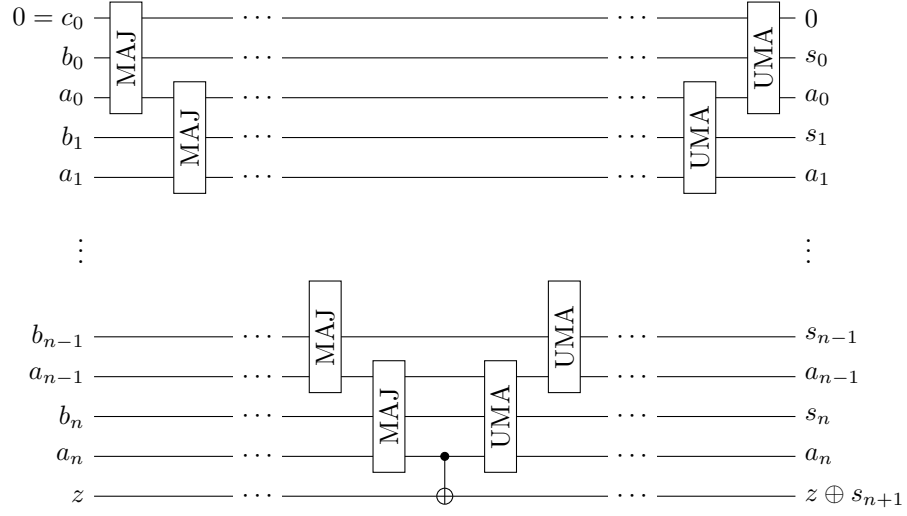


Figure 3: Adder_CDKM_MAJ

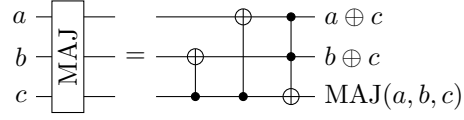


Figure 4: Adder_CDKM_UMA

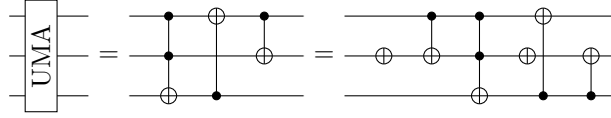


Figure 5: Adder_VBE

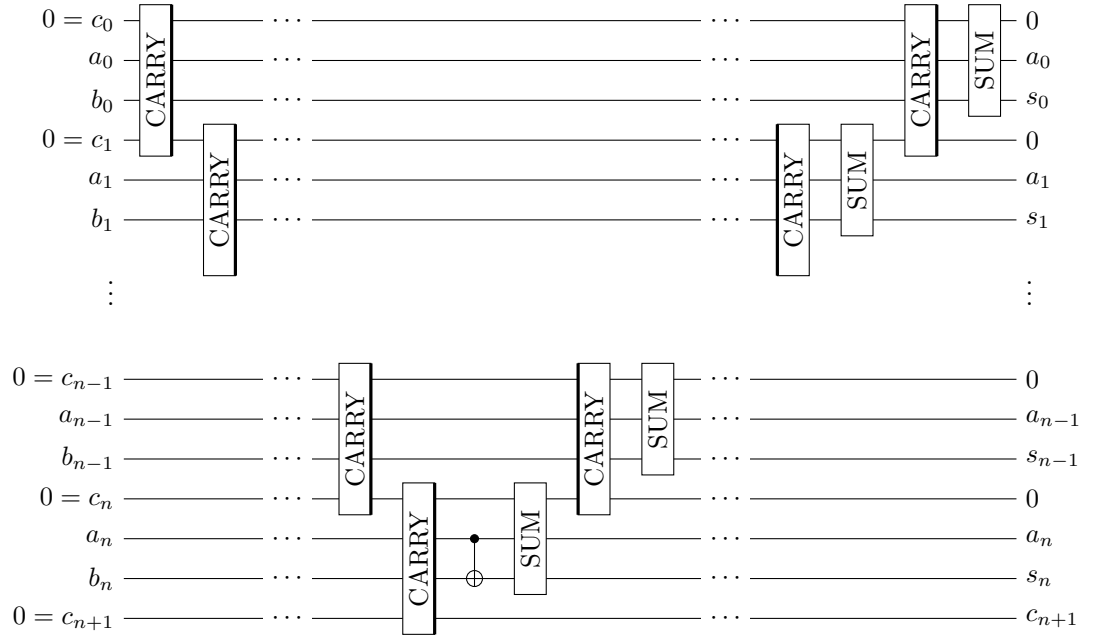


Figure 6: Adder_VBE_Carry

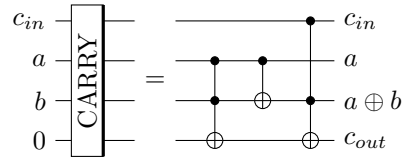


Figure 7: Adder_VBE_Sum

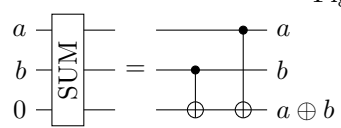


Figure 8: AutoTest

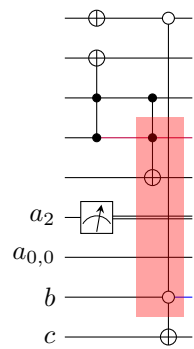


Figure 9: BasicTeleportation

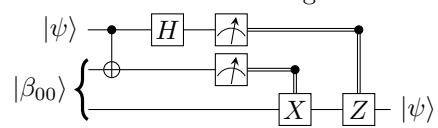


Figure 10: CoherentSuperDenseCoding

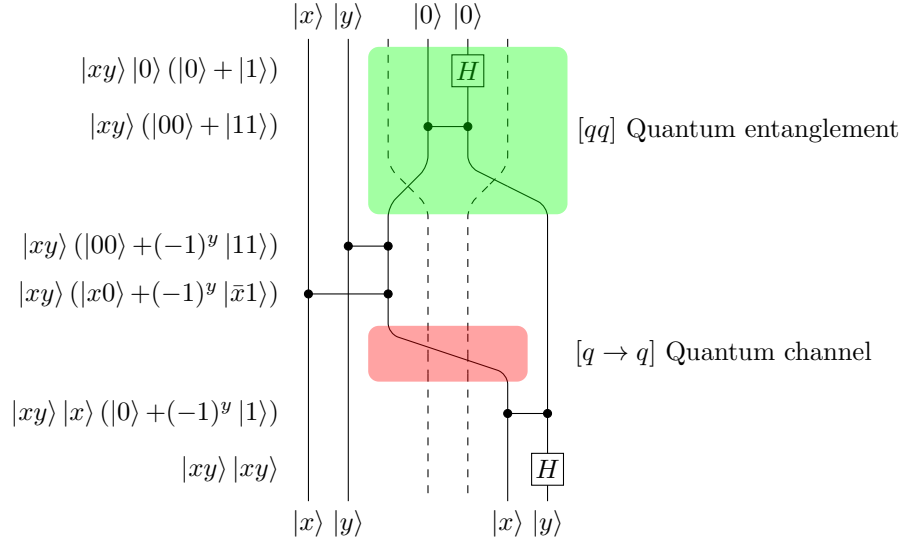


Figure 11: ModAdder

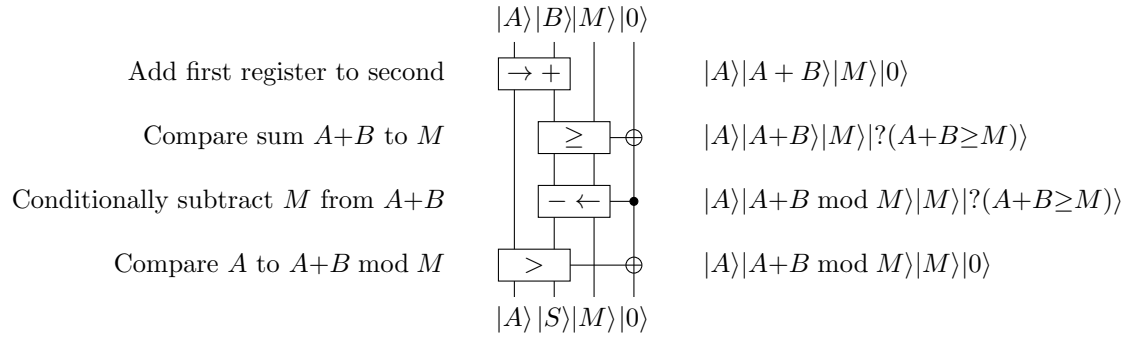


Figure 12: ModExp

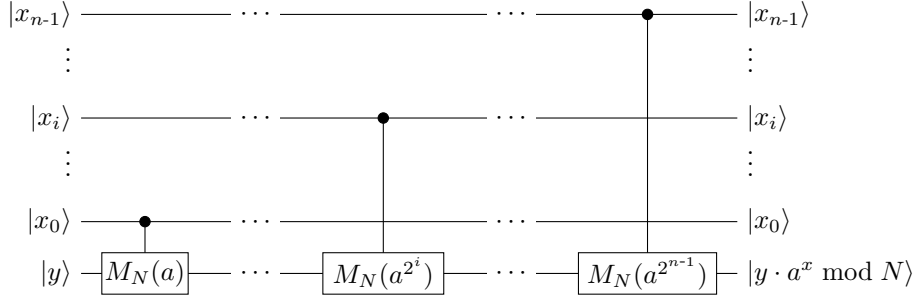


Figure 13: NestedLevels

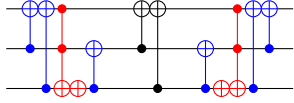


Figure 14: PleaseTouch

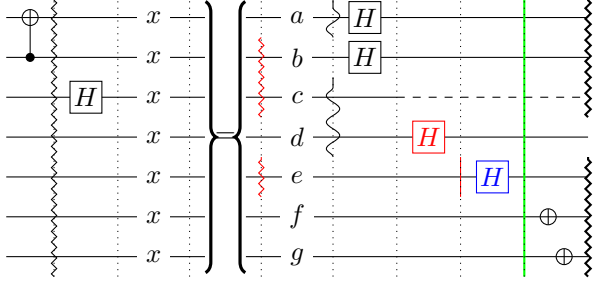


Figure 15: QFT3v1

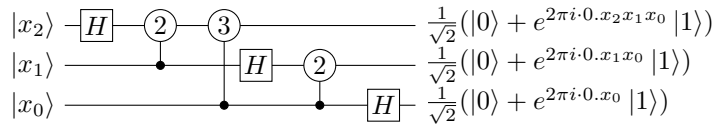


Figure 16: QFT3v2

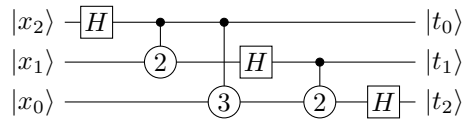


Figure 17: QFT4

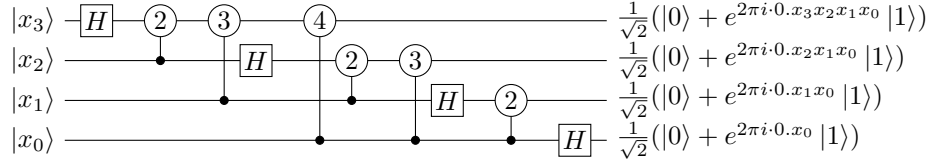


Figure 18: QFT4vert

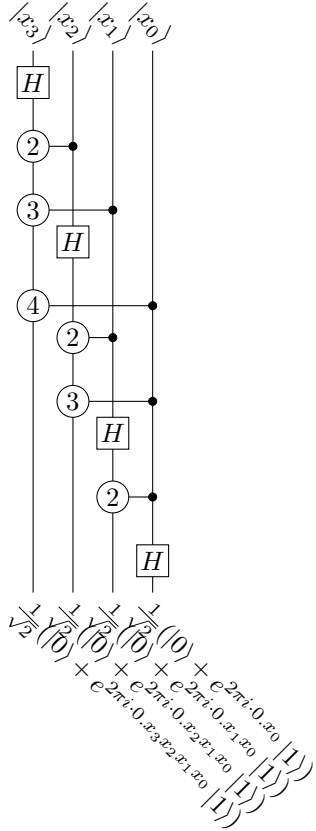


Figure 19: QuantumTeleportation

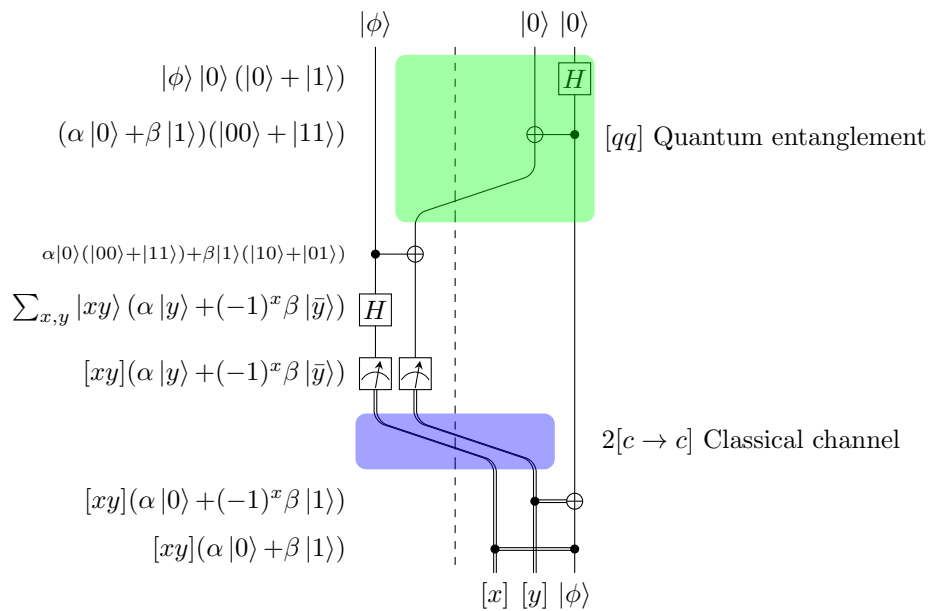


Figure 20: RecursiveQFT

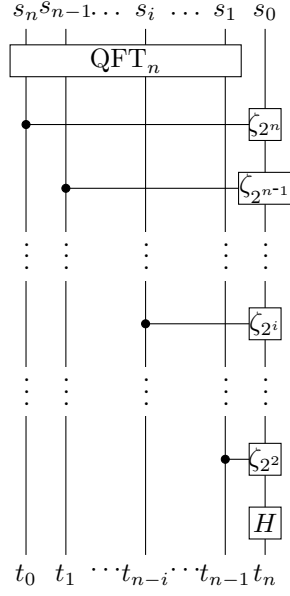
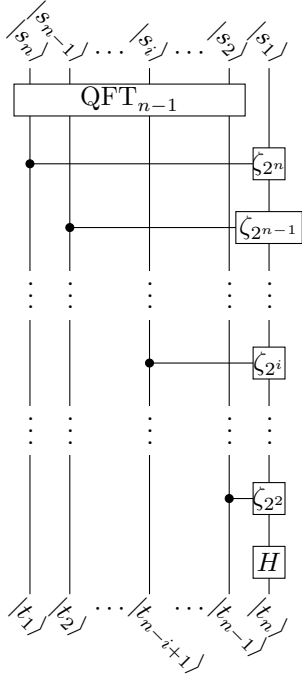


Figure 21: RecursiveQFTv2



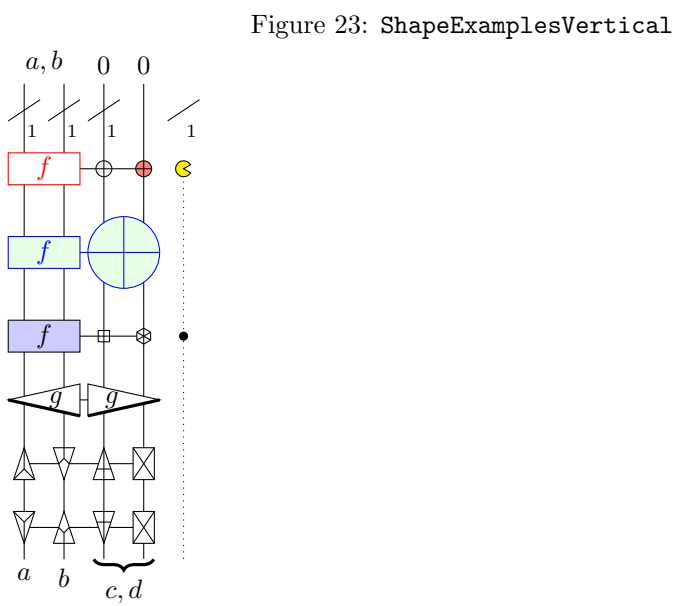
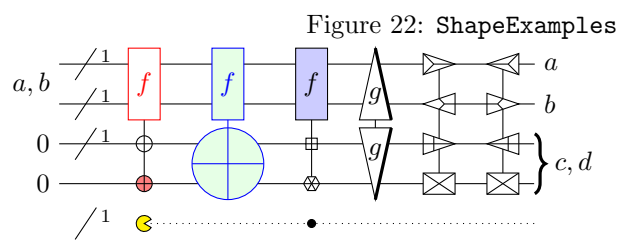


Figure 24: **ShorNutsHELL**

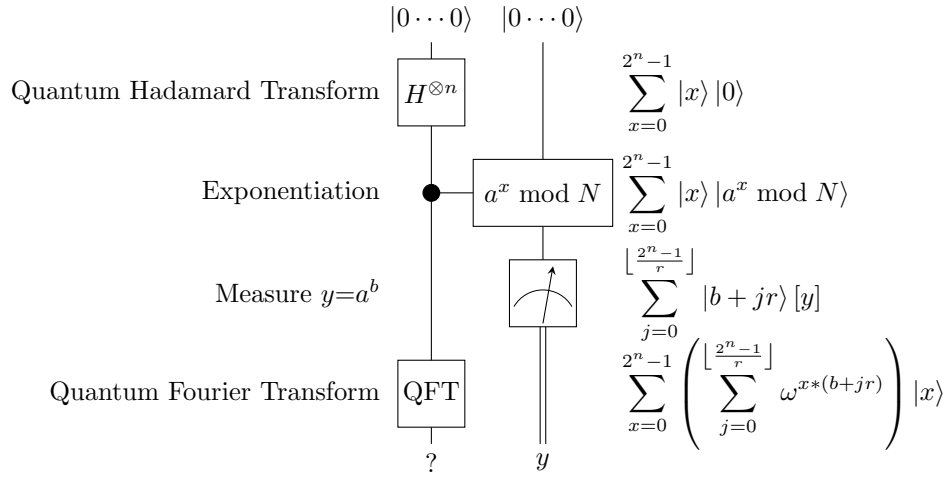


Figure 25: **Simon**

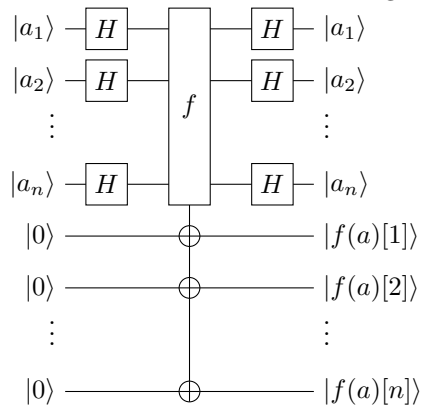


Figure 26: Steane_N00P

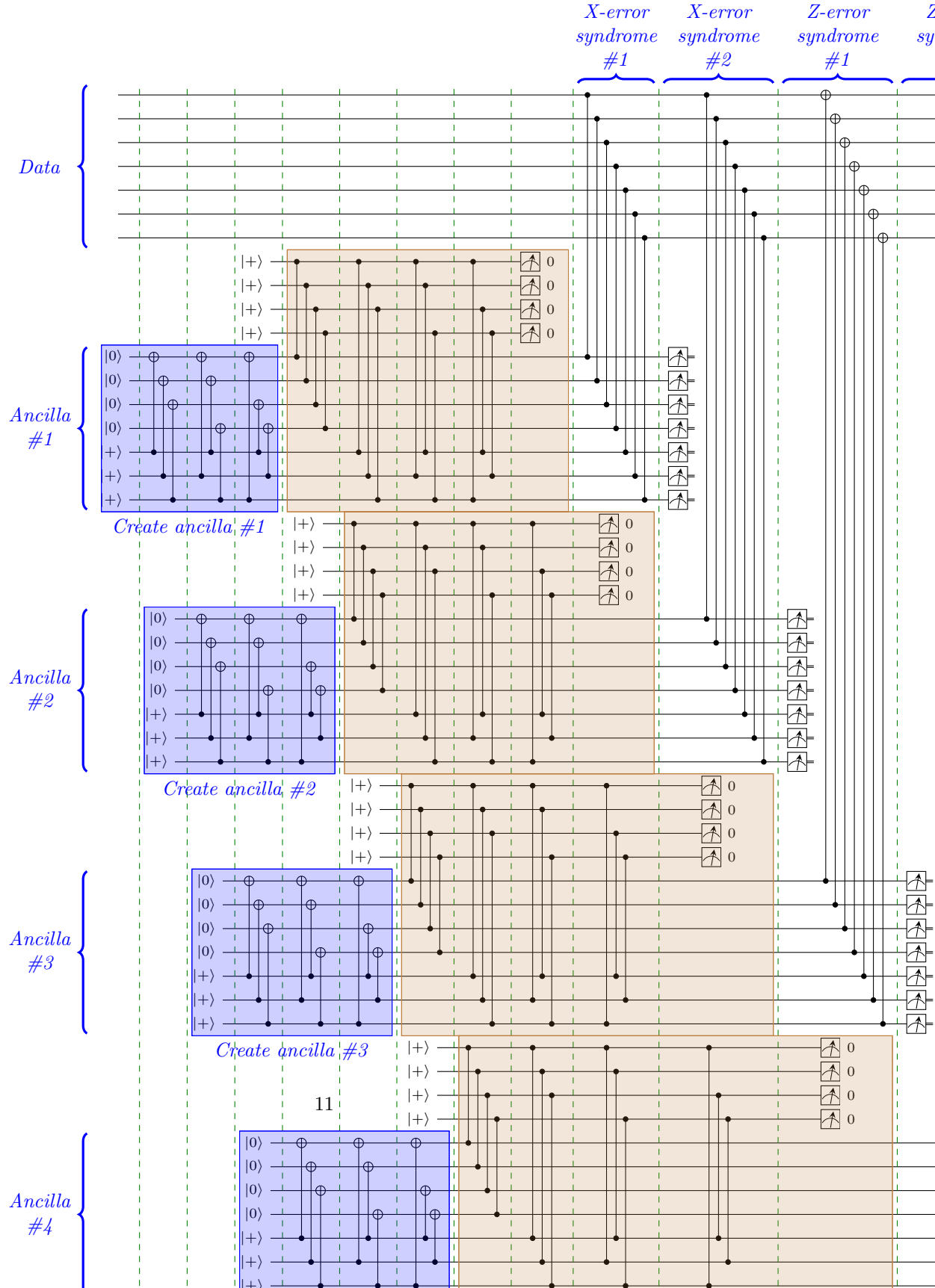


Figure 27: SuperDenseCoding

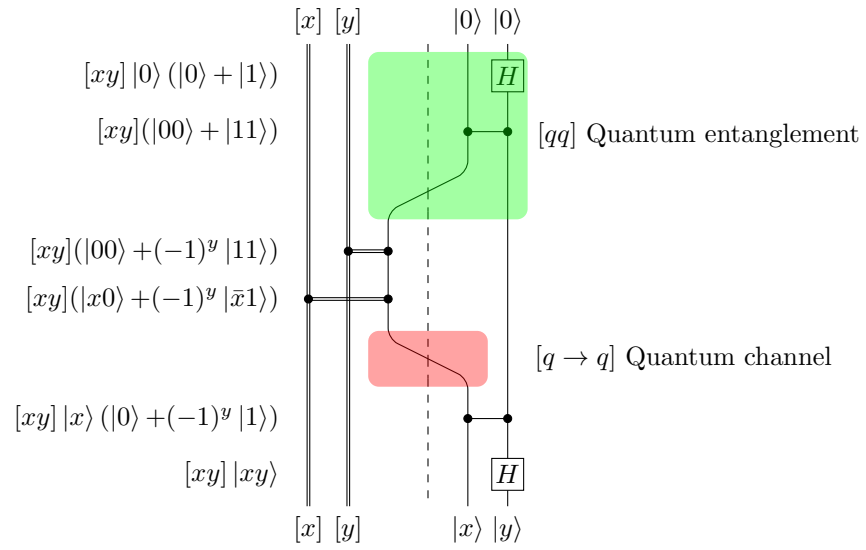


Figure 28: Teleport

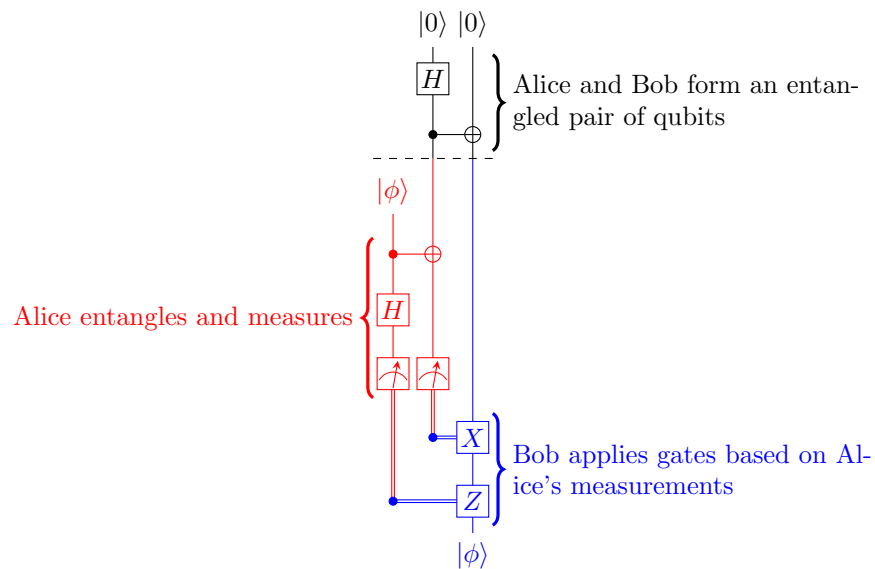


Figure 29: boxtest

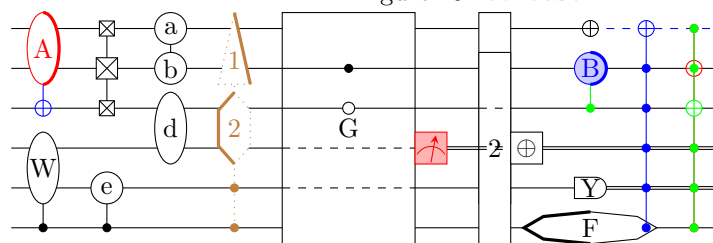


Figure 30: cswap

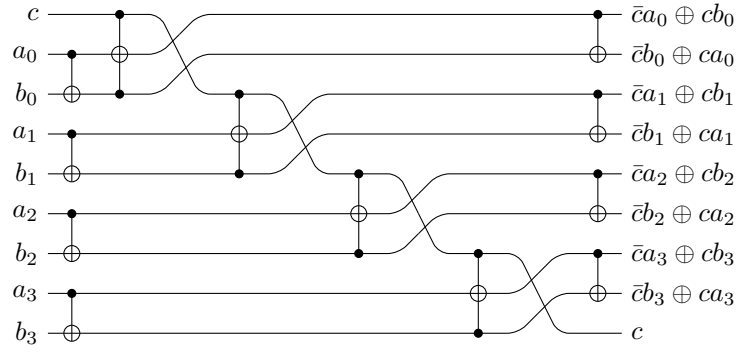


Figure 31: gatecompare

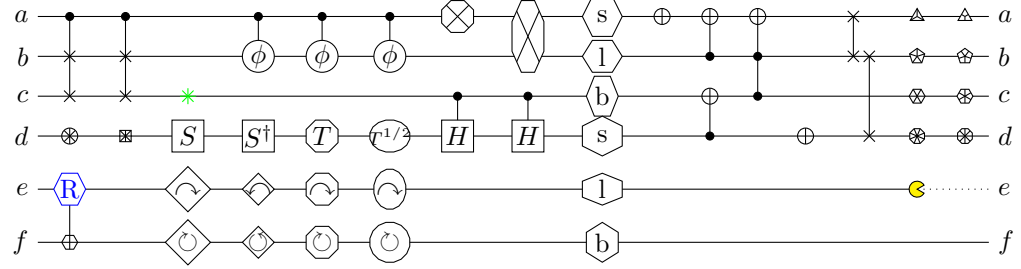


Figure 32: measure

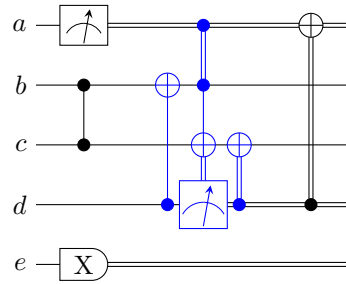


Figure 33: measure_tag

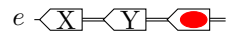


Figure 34: oop

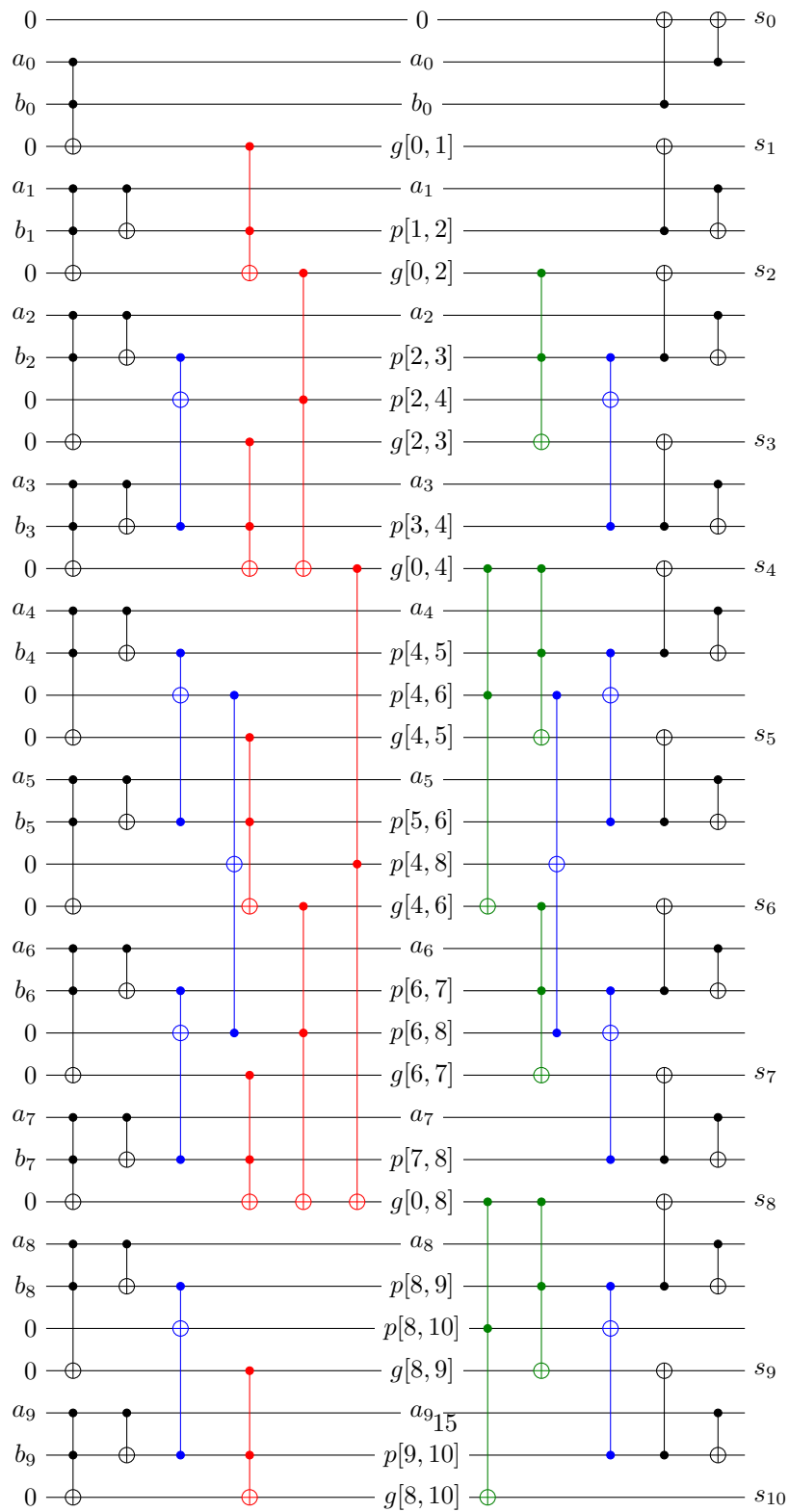


Figure 35: permute

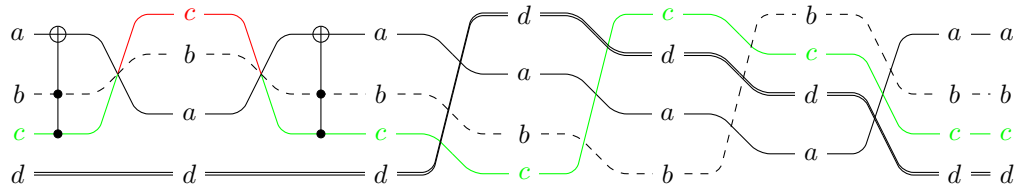


Figure 36: phantom_test

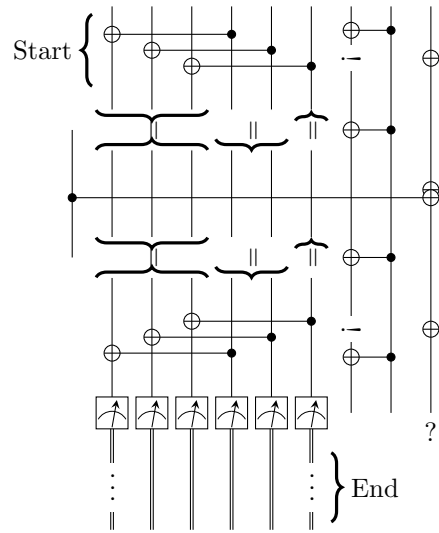


Figure 37: reverse-8

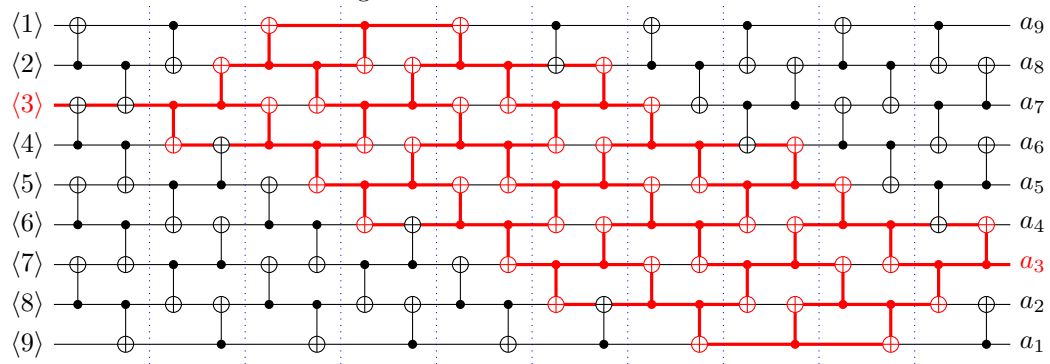
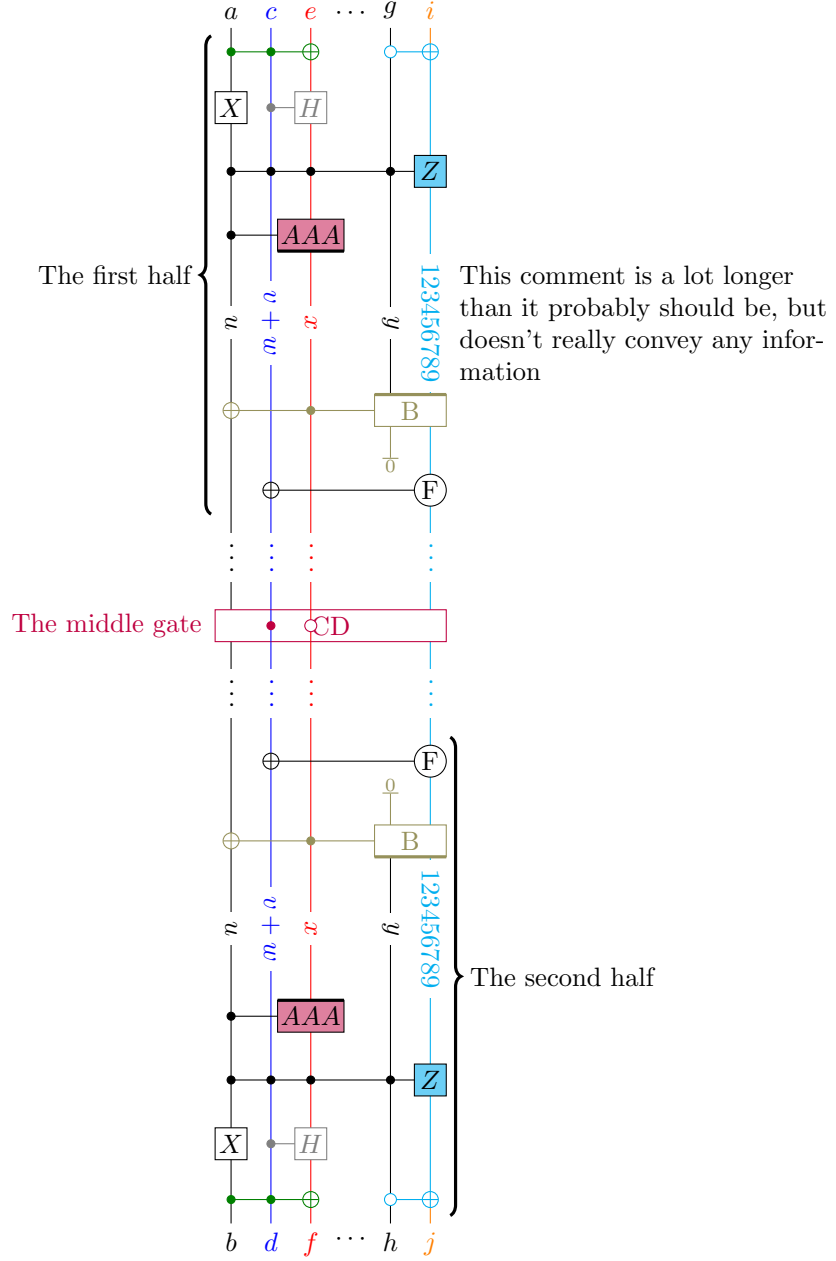


Figure 38: sink



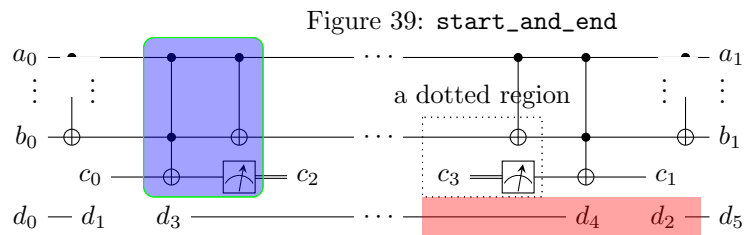


Figure 40: starwars

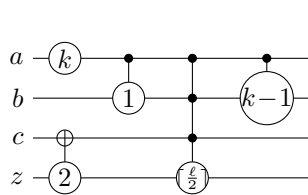
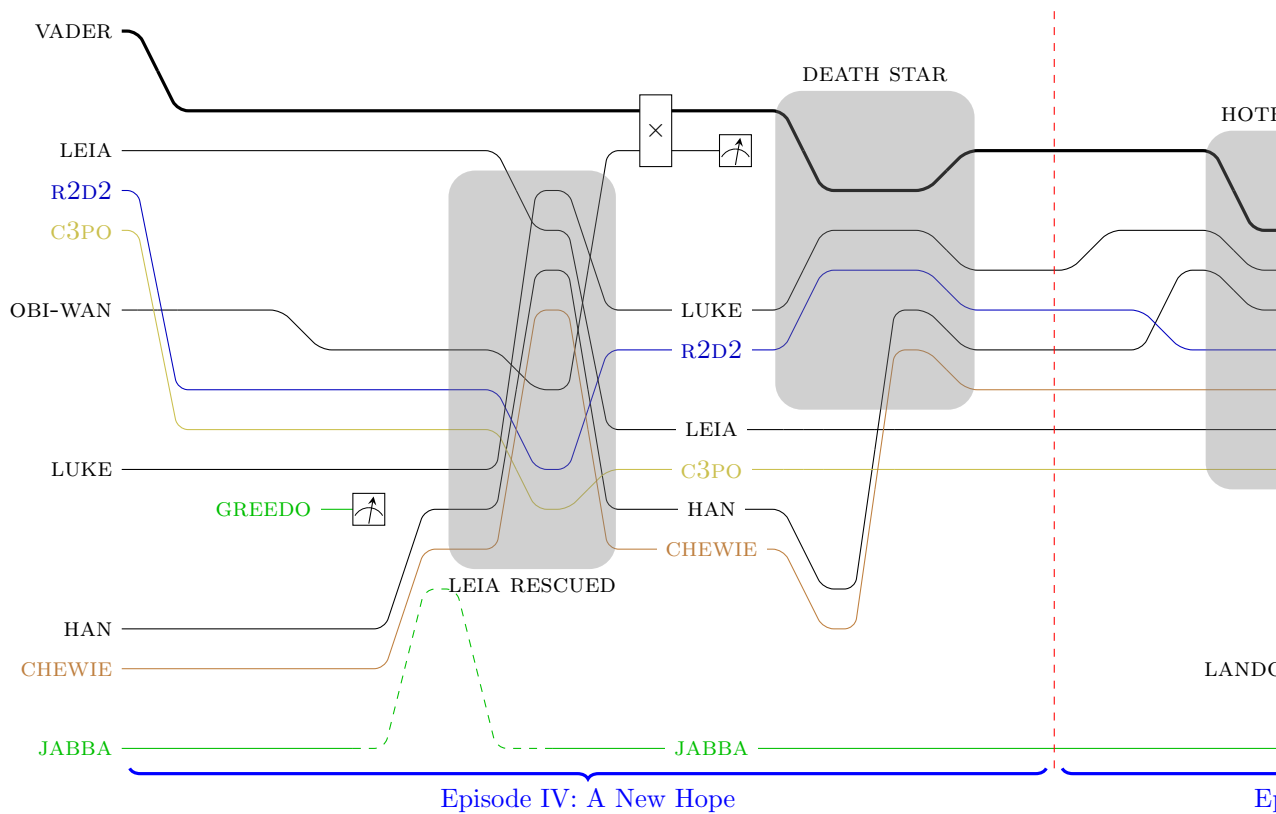


Figure 42: test40

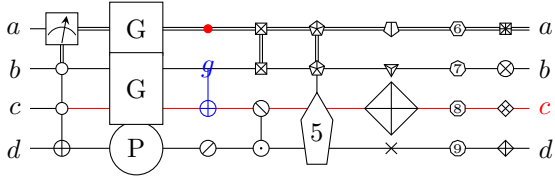


Figure 43: through

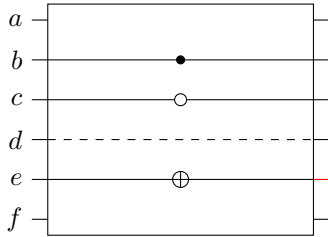


Figure 44: tmp

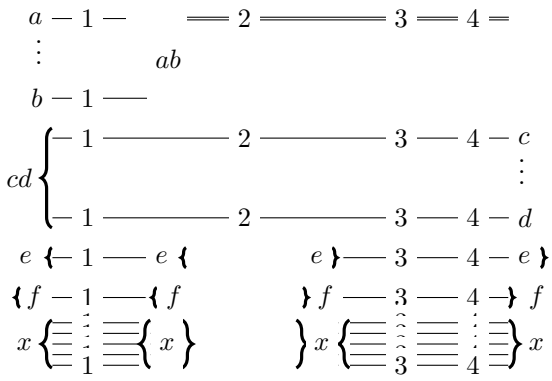


Figure 45: wiretest

