

PRE-TREATMENT REPORT

Clinic: U of Chicago CCC at SCH

Plan: Dlt4QA\_Prst  
Planned: 12/29/2014 6:49 PM  
Measured: 12/29/2014 6:58 PM  
Comments:

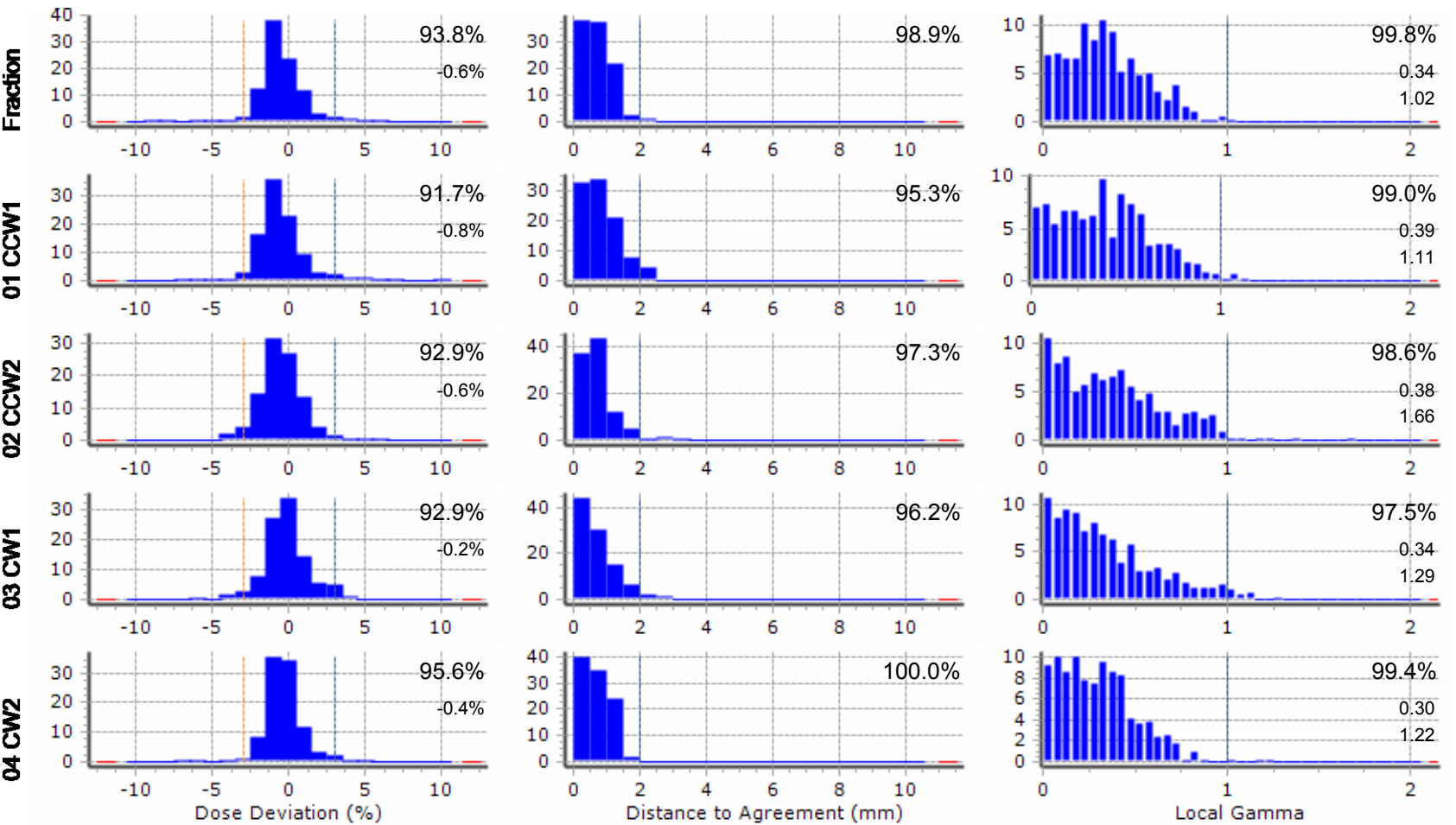
Treatment Summary

Radiation Device: SCHTrueBeam  
Temperature: 22.2 °C  
Reference: Planned Dose

Beam	Gantry	Energy	Daily corr factor	Norm dose	Det within acceptance			Median dose dev
Fraction					Dev	DTA	Local-γ	
01 CCW1	162° to 290°	6 MV	1.005	2.47 Gy	93.8%	98.9%	99.8%	-0.6%
02 CCW2	235° to 199°	6 MV	1.005	0.33 Gy	91.7%	95.3%	99.0%	-0.8%
03 CW1	199° to 235°	6 MV	1.005	0.44 Gy	92.9%	97.3%	98.6%	-0.6%
04 CW2	290° to 162°	6 MV	1.005	1.25 Gy	92.9%	96.2%	97.5%	-0.2%

Histograms

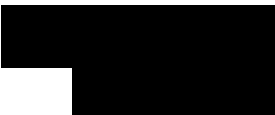
Reference: Planned dose



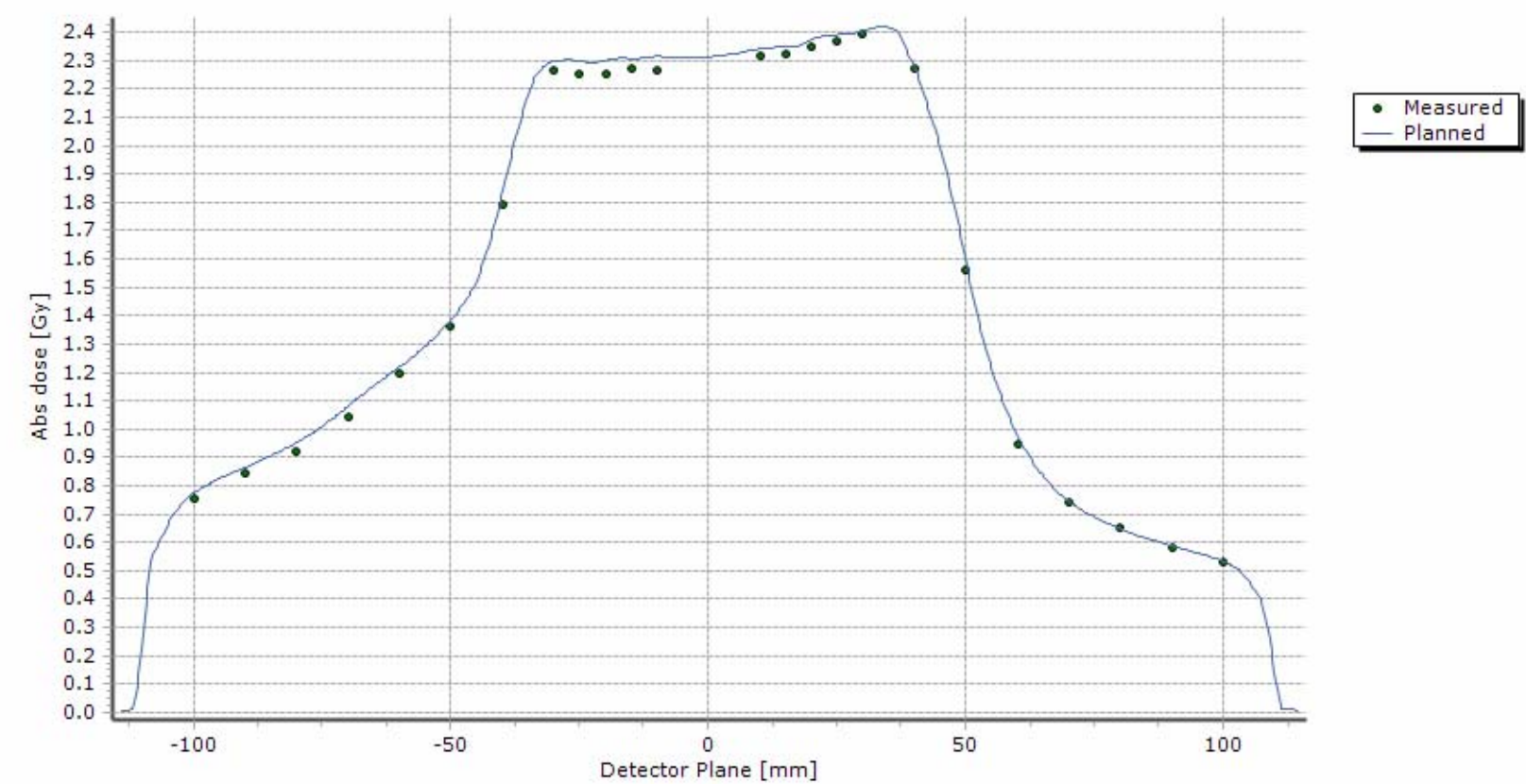
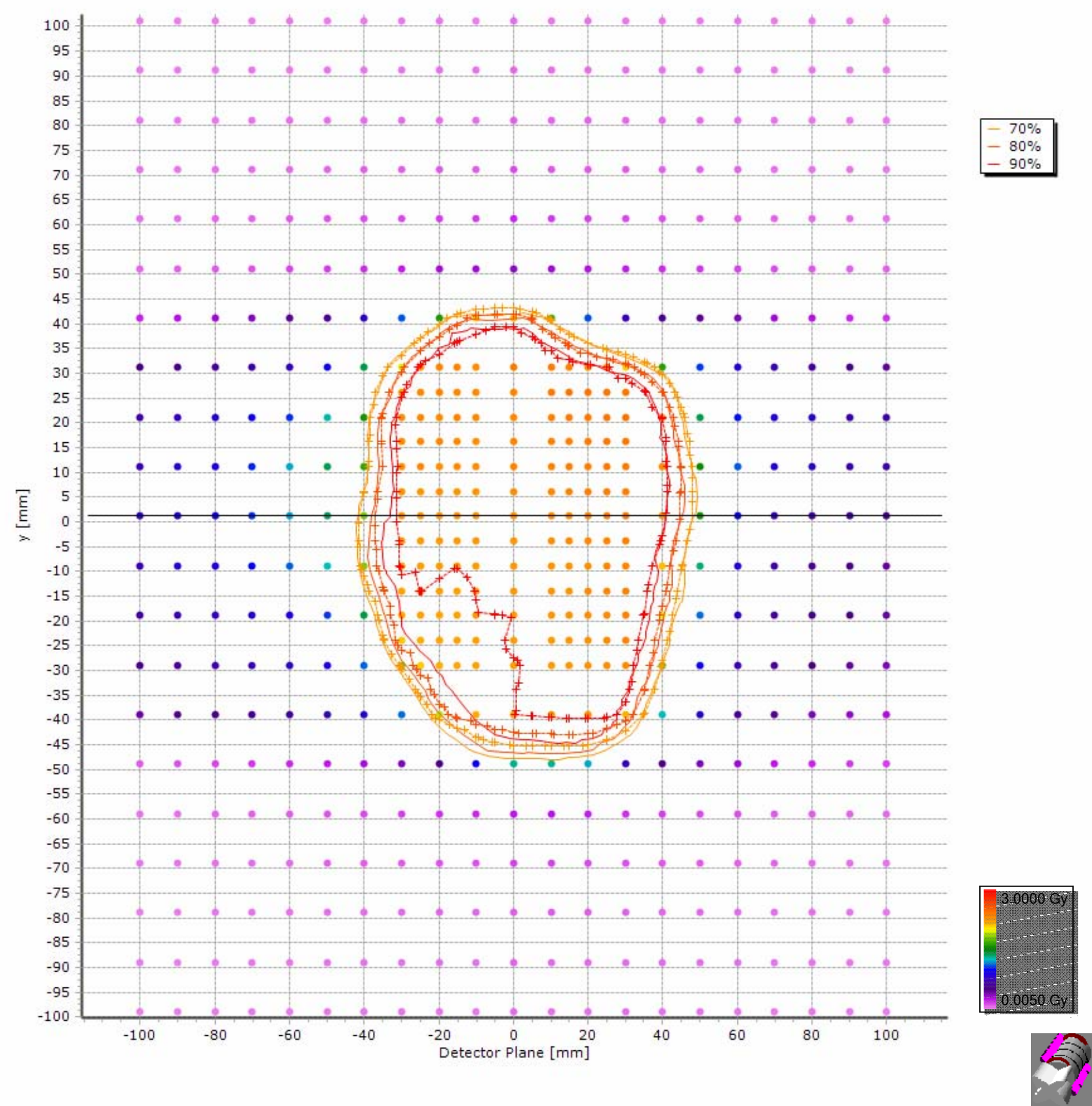
Parameter Definitions & Acceptance Criteria, Detectors

Parameter	Selected Detectors	Δ Dose	Δ Dist	Acceptance Limits
Dose Deviation	Dose from 20% to 500%	n.a.	n.a.	90% within ±3.0%
Dist to Agreement	Gradient >= 1%/mm	n.a.	n.a.	90% with DTA <= 2.0 mm
Local Gamma	Dose from 20% to 500%	±3.0%	2.0 mm	95% with gamma < 1

PRE-TREATMENT REPORT

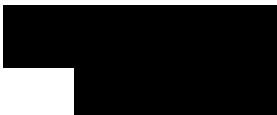


Absolute dose, Fraction

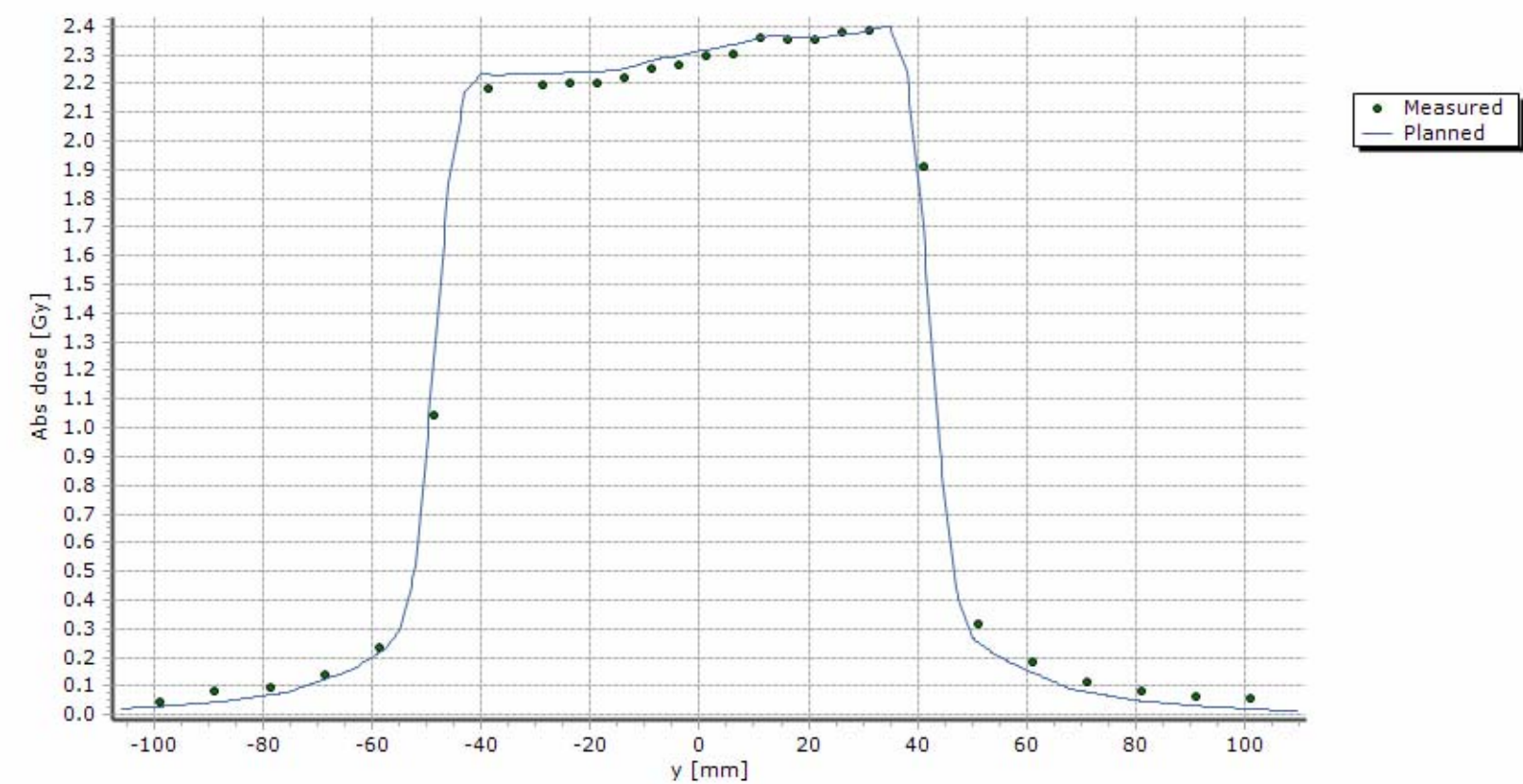
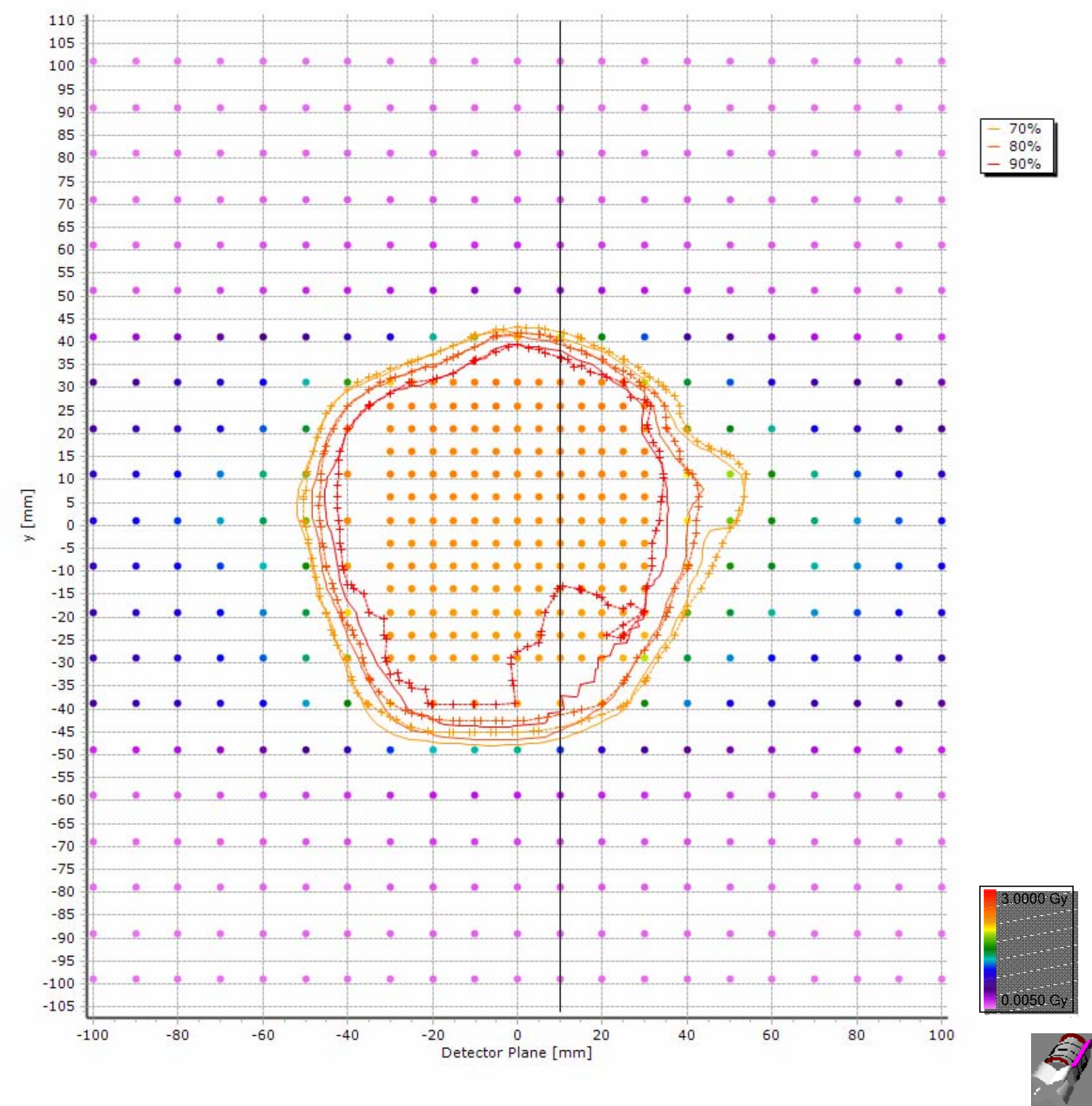




PRE-TREATMENT REPORT

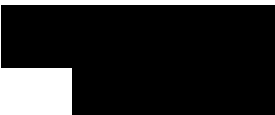


Absolute dose, Fraction

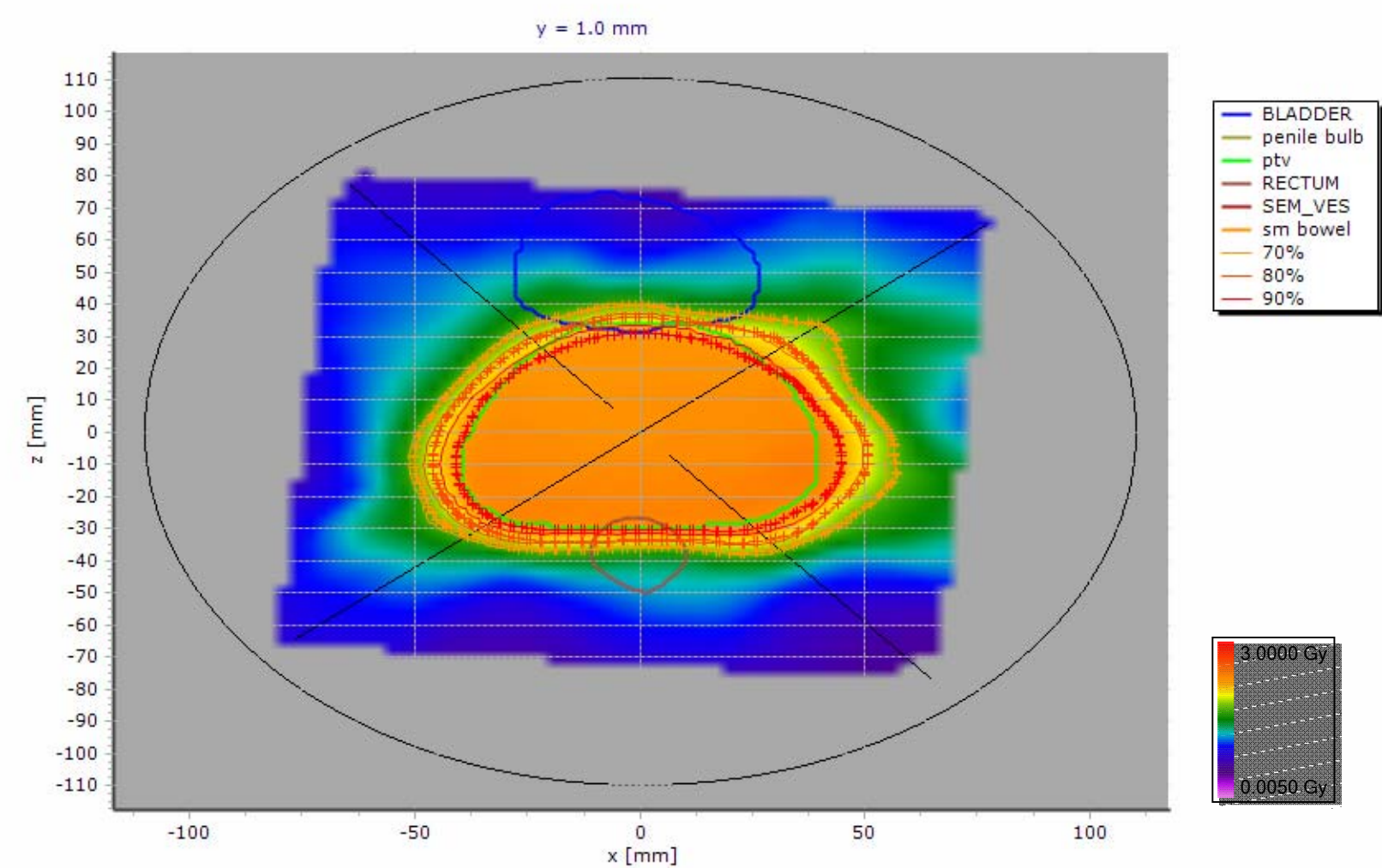




PRE-TREATMENT REPORT



Absolute dose, Fraction



DVH, Fraction

