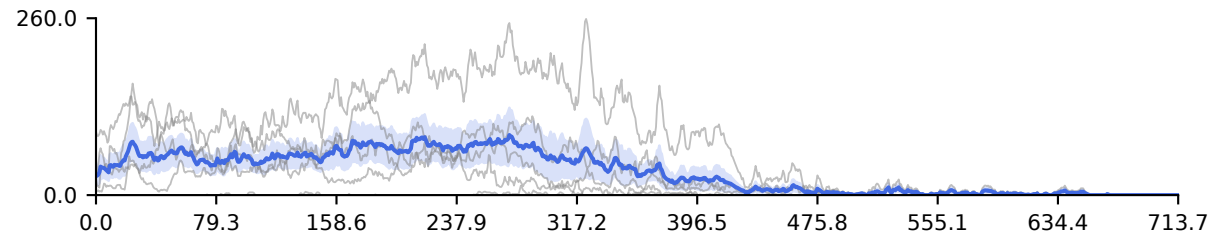


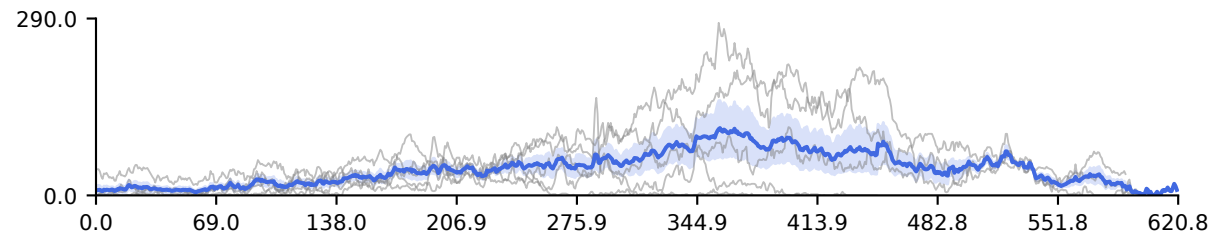
# Project "AxoDen Analysis"

## Signal Intensity Along the Medio-Lateral and Dorso-Ventral Axes

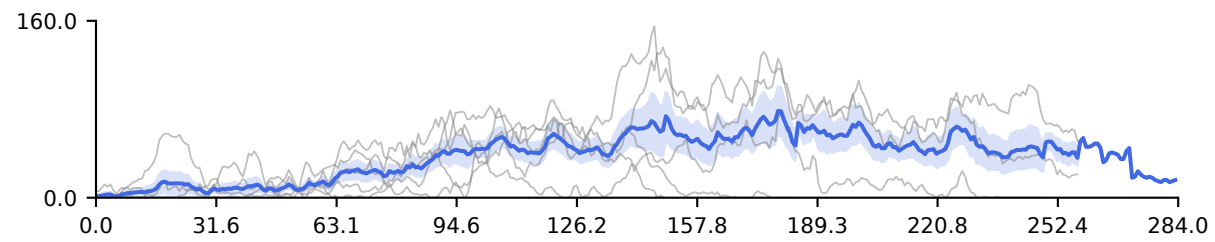
TH-VP



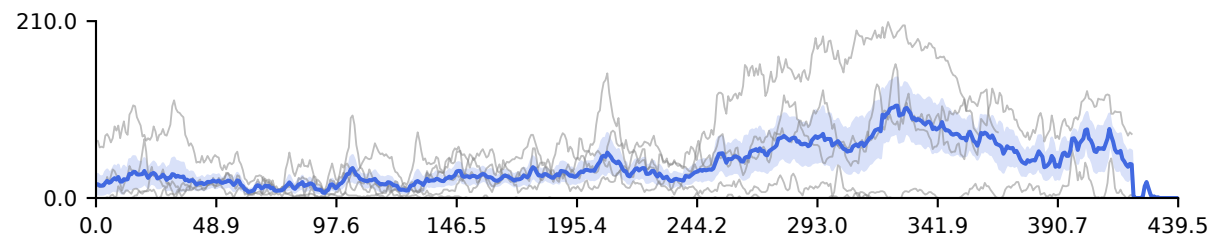
TH-VL



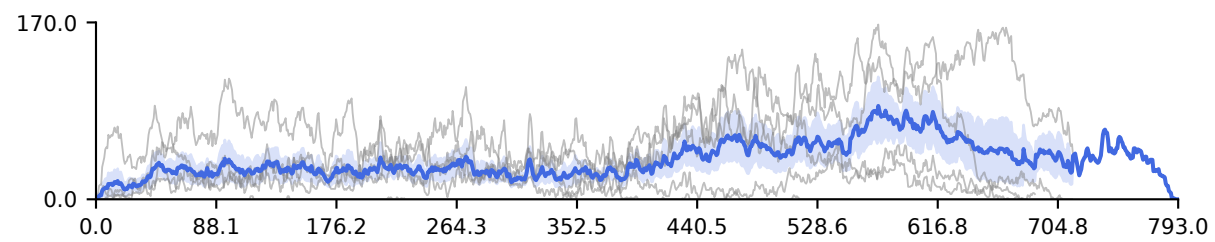
TH-PL



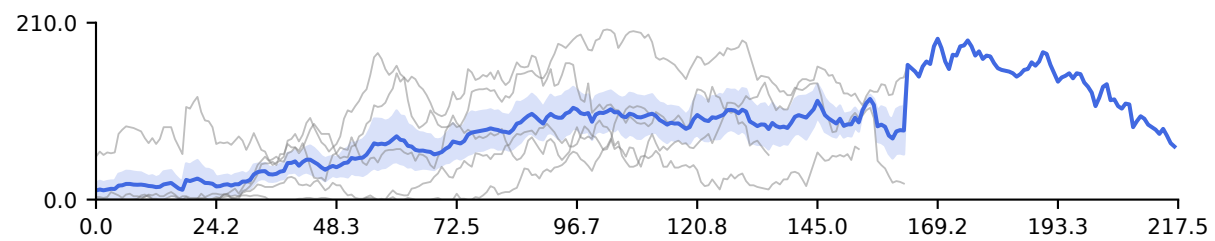
TH-MD



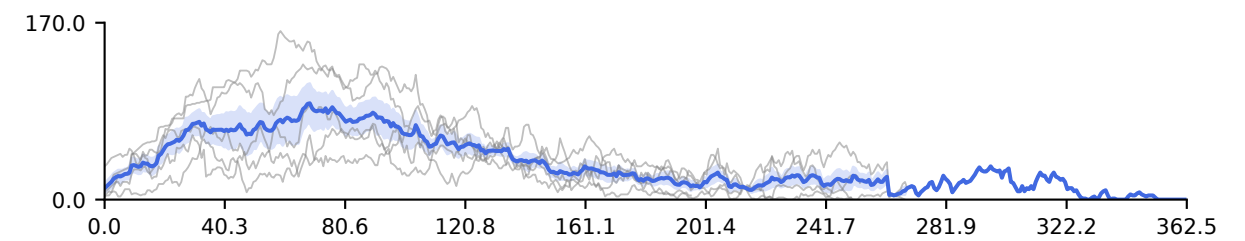
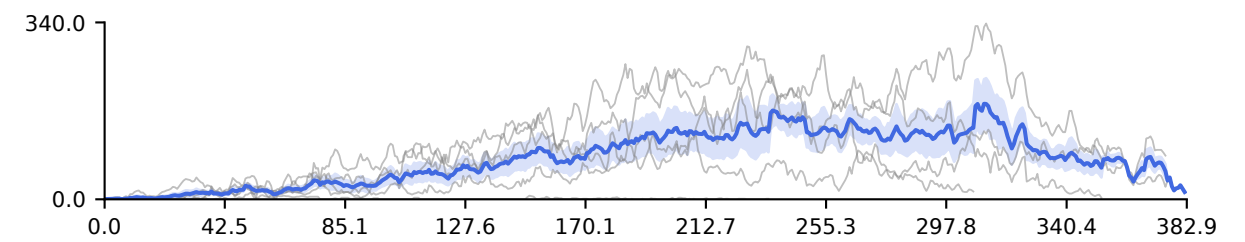
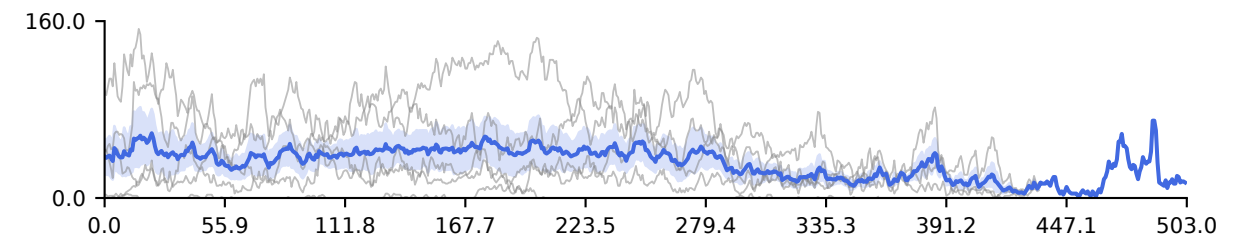
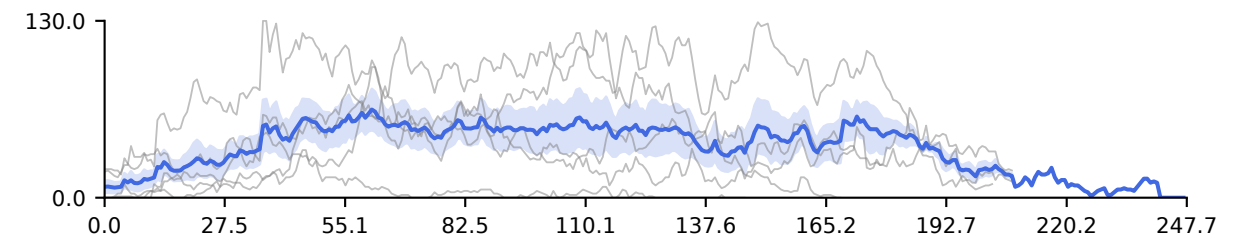
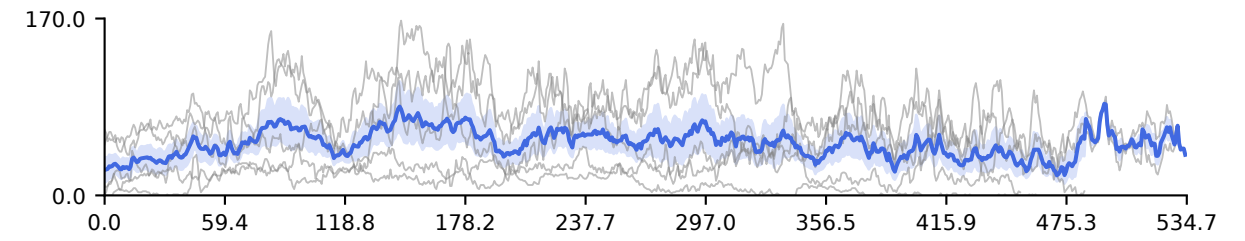
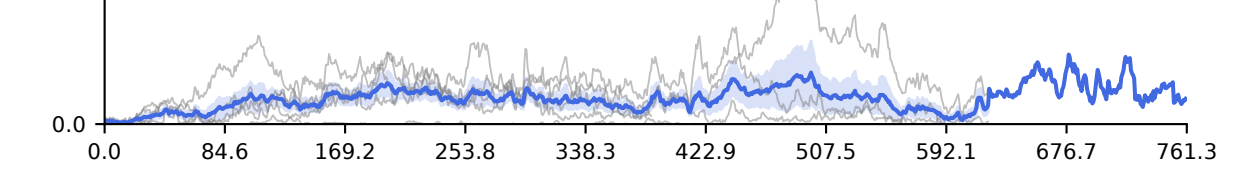
TH-CM



TH-CL



Medio-Lateral axis ( $\mu\text{m}$ )



Dorso-Ventral axis ( $\mu\text{m}$ )